

Allegheny River Trail Sunny Slopes Connector Road

Approximately 15 miles south of Franklin along the Allegheny River Trail, just before the Kennerdell Tunnel, or 13 miles north of Emlenton, there is a connector road off of the paved trail onto North Kent Road. This is a rural, dirt road that is shared by the camps and houses in the area. The connector is about 1/2 mile long with some small hills. The pictures below will show the surface and the inclines along the way.

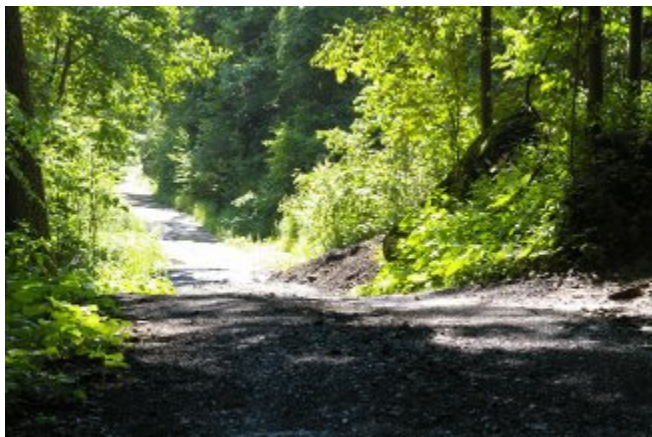
Traveling North...



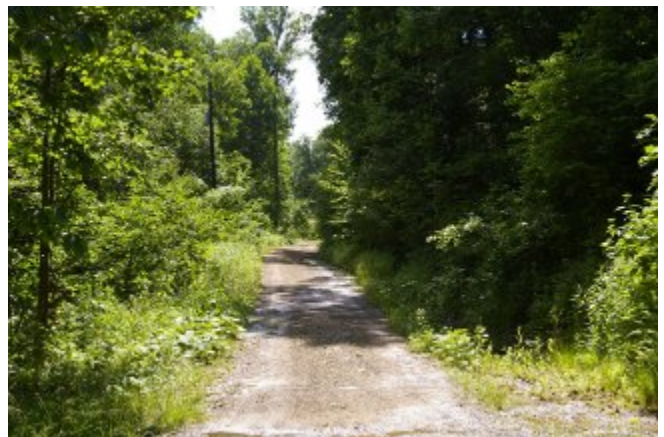
Bare right at the fence.
Start up the hill which is
about a 5-6% grade.



Notice the blue blazes?
Parts of the Allegheny River
Trail are also used as the
North Country Trail.



The other side is not as steep.





Another small hill...



...with a 7% grade down. Slow, rough.



Bare left at the sign.



A slight down hill to trail.
Caution, sand at bottom

Some views traveling south. . .



Bare left with a short, slight grade.



Careful sand.



Turn right and continue south.



Two short hills.



Go slow down grade back to the paved surface. Stay to left of fence.